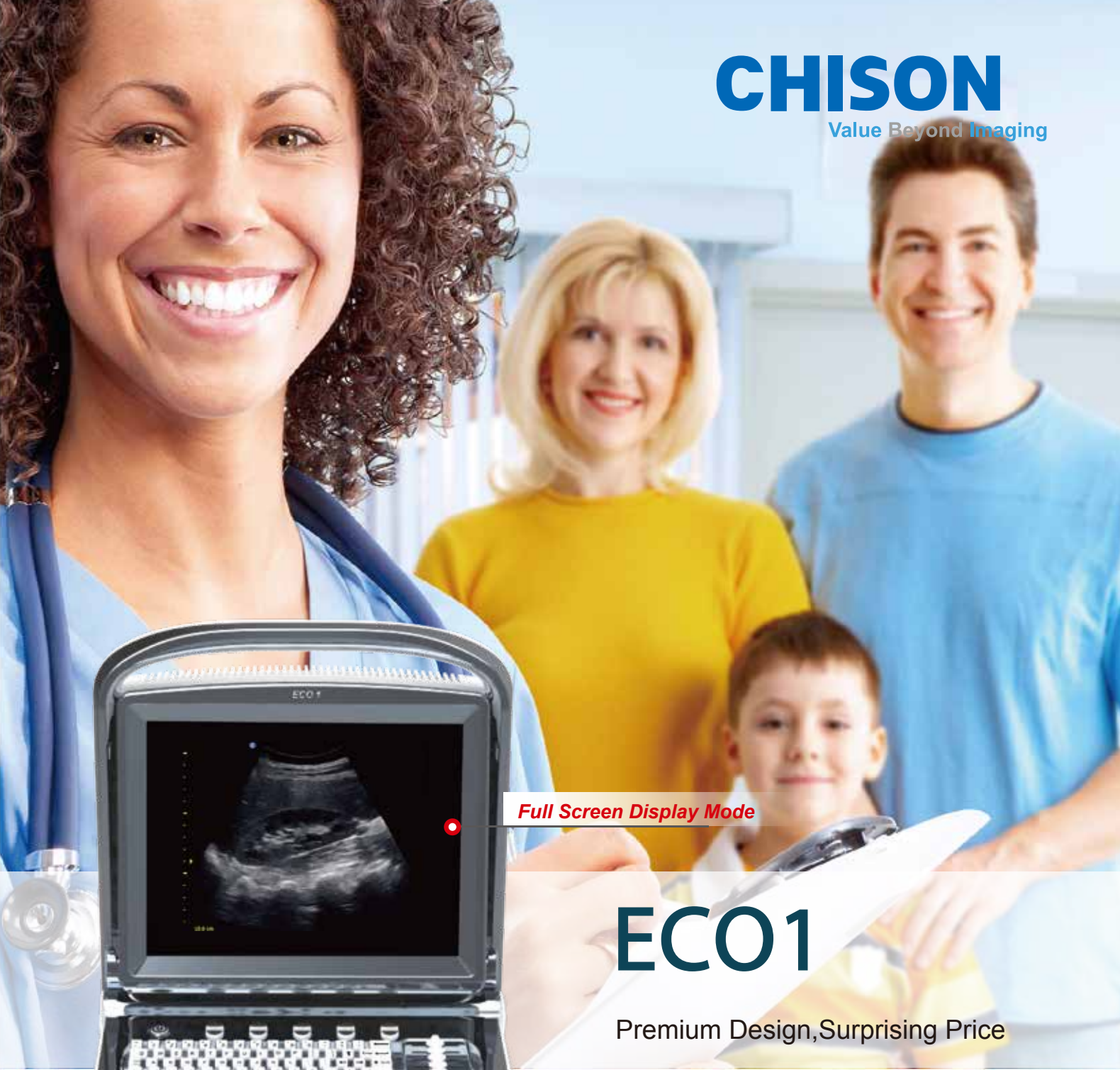


CHISON
Value Beyond Imaging



Full Screen Display Mode

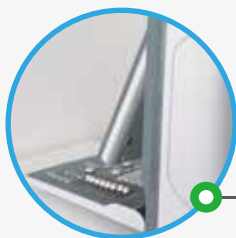
ECO1

Premium Design, Surprising Price



WWW.CHISON.COM

User-friendly and Modern Design



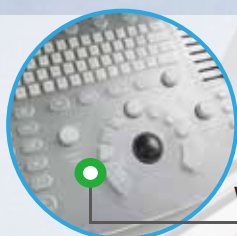
12 inch rotatable LED monitor (0~30°)
with different viewing angles



Vehicle Power Charger



One key to quickly save



Water-proof keyboard Cover



DICOM 3.0 (option), USB

ECO1

Premium Design, Surprising Price



Ultra-compact

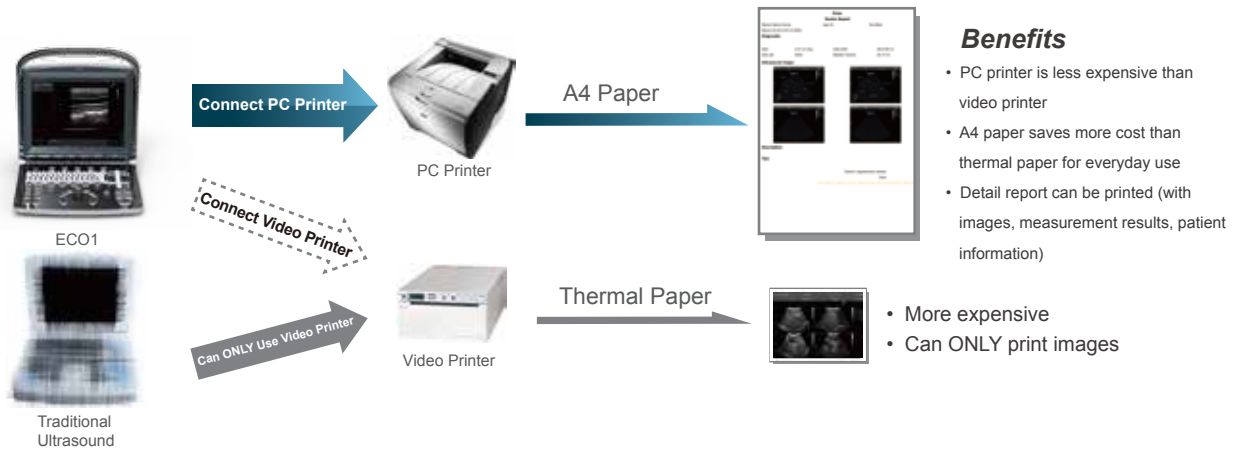


Clips for quickly recall
(CINE, Still images)



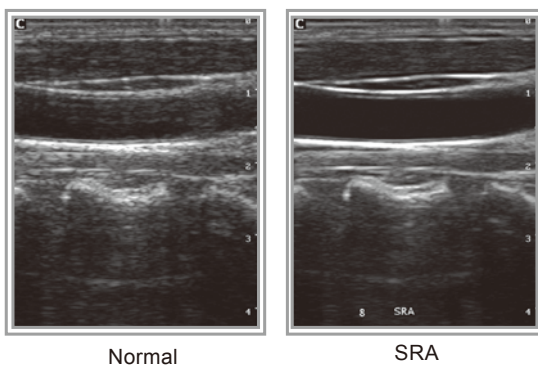
Carrying case (BG-100):
go anywhere you want

Support PC Printer



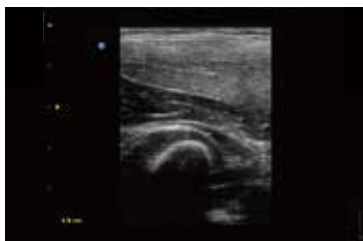
Advanced Technologies

Speckle Reduction Algorithm(SRA)



SRA is the technique that uses a variety of denoising algorithm to suppress speckle, smooth the tissue images, and make the faint edge more appearing.

Great image quality



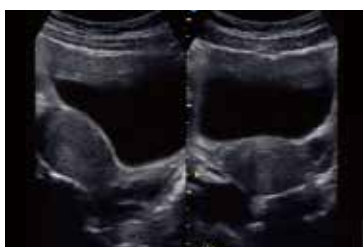
Elbow Joint, B Mode



Fetal Hand, B Mode



Fetal Head, B Mode



Uterus, 2B Mode



Follicle, B Mode



Kidney, B Mode

Specifications

| | |
|-----------------------|--|
| Applications | Abdominal, OB/GYN, Urology, Pediatric, Small Organ(breast, testes, thyroid); Cardiac, Peripheral Vascular, Musculoskeletal Conventional & Superficial |
| Display Modes | B, B/B, 4B, M, B/M |
| Zoom | PIP zoom & Pan zoom |
| Advanced Technologies | THI, i-Image, SRA, Compound |
| Option | 2nd Probe Connector, DICOM 3.0, Water-proof keyboard Cover, Carrying Case (BG-100), Support PC Printer, TR 9000, Built-in Battery |



2.5MHz - 5.0MHz Convex
C3-A



5.3-10.0MHz Linear
L7M-A



5.3-11.0MHz Linear
L7S-A



2.5 MHz-5.0MHz Micro-Convex
MC3-A



4.5 MHz -8.0MHz Transvaginal
V6-A



4.5MHz - 8.0MHz Micro-Convex
MC6-A

CHISON Medical Technologies Co., Ltd

Sales & Service Contact Address:

No.9, Xinhuihuan Road, Xinwu District, Wuxi, Jiangsu, China 214028

TEL: 0086-510-85310593 / 85310937 FAX: 0086-510-85310726 EMAIL: export@chison.com.cn